



**CITY OF PEARLAND**  
**PROJECTS DEPARTMENT**  
3519 Liberty Drive, Suite 300  
Pearland, Texas 77581  
[www.cityofpearland.com/projects](http://www.cityofpearland.com/projects)

## **TRAFFIC ADVISORY**

---

**To:** Pearland Police Department  
Pearland Public Works  
Pearland ISD  
Pearland Fire Department  
Pearland EMS  
Pearland Public Affairs  
US Mail Postmaster

**From:** Cuong Le, CAPM  
Project Manager

**Date:** January 20, 2012

**Subject:** **TRAFFIC ADVISORY: State Highway (SH) 35 Mitigation Ponds Project Begins Monday, January 23, 2012**

---

The SH35 Mitigation Ponds Project will begin with mobilization activities such as offloading of equipment, materials and staging on Monday, January 23, 2012. The scheduled four months project consists of mitigation areas at Hickory Slough and Clear Creek and resulted from TxDOT's improvements and widening of SH 35.

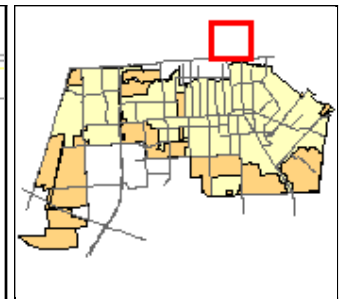
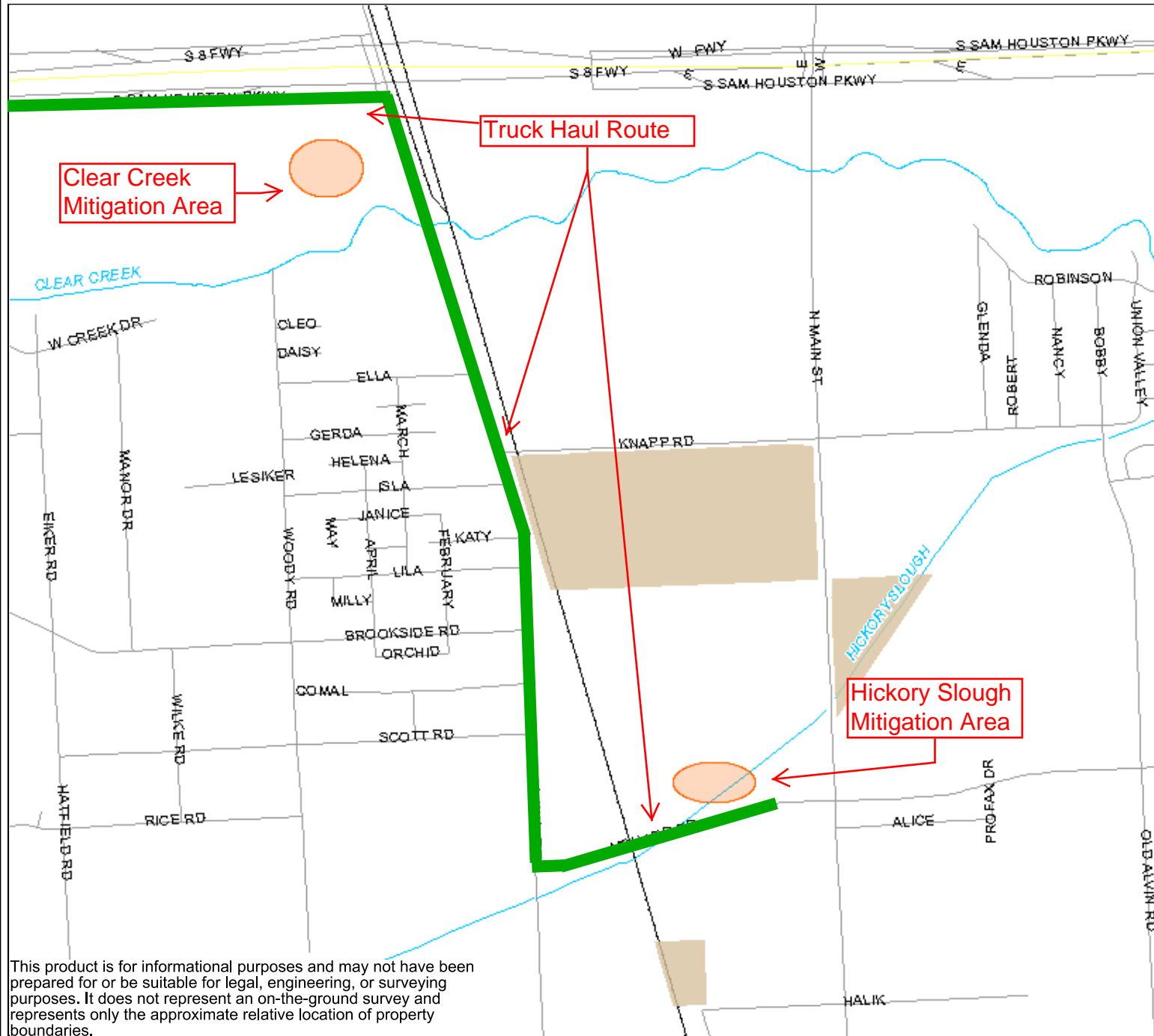
The contractor plans to start with Hickory Slough mitigation area which is located just north of the McHard Road crossing and then move to the Clear Creek mitigation area which is located west of Mykawa Road between Clear Creek and Beltway 8. Please see map for more information.

While road closures are not anticipated, travelers are advised to exercise extreme caution as equipment and personnel will be in close proximity to the travel lanes. The City encourages the public to please obey the work zone speed limits, watch for flaggers and use patience as the area is a construction zone.

Businesses throughout the project limit will remain open and accessible. We apologize in advance for any inconvenience this may cause. Thanks for your cooperation.

# SH35 Mitigation Ponds

20-Jan-12 12:07 PM



This product is for informational purposes and may not have been prepared for or be suitable for legal, engineering, or surveying purposes. It does not represent an on-the-ground survey and represents only the approximate relative location of property boundaries.

Scale 1:14,566  
1 in = 1,214 ft